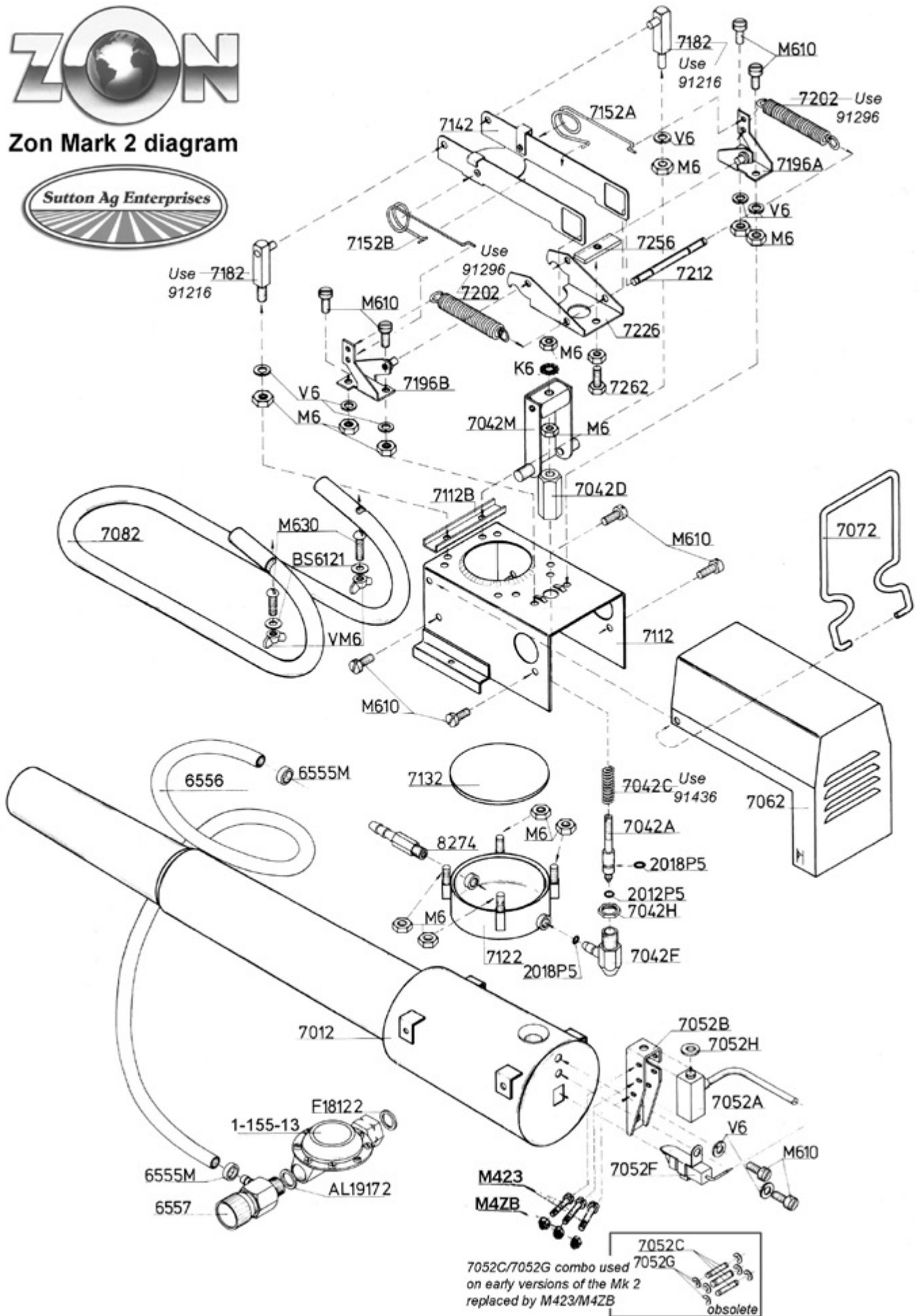




Zon Mark 2 diagram



SUTTON AGRICULTURAL ENTERPRISES, INC.

1044 Harkins Road • Salinas, CA USA 93901 Phone 831/422-9693 - or - 866/280-6229

ZON MARK 2 PARTS LIST

CANNON BODY:

7012	Megaphone, Complete
7062	Cover/Lid *
<i>*Lid is no longer available new. Limited availability of used lids.</i>	
7072	Handle
7082	Frame
M625	Bolt, M6x30
VM6	Butterfly Nut, M6
M612	Bolt, M6x12
BS6121	Washer, 6X21X1

MECHANISM:

7102	Mechanism, Complete
7112	Main Body(NO LONGER AVAIL. AS NEW)
7112-R	Main Body, REBUILT
7112B	U-Support Bar
7122	Diaphragm Holder
7132	Diaphragm
7142	Diaphragm Lever
7152A	Right Torsion Spring
7152B	Left Torsion Spring
7182	Joint Pin
7196A	Right Spring Holder
7196B	Left Spring Holder
7202	Pull Spring
91296	Pull Spring
7212	Pull Spring Pin
7226	Tripper
7256	Ballast Axle
7262	Spark Bolt
BS6121	Washer, 6x12x1
M612	Bolt, M6x12
V6	Washer, 6mm
M6	Hexagonal Nut, M6

GAS VALVE:

7042	Gas Valve, Complete
7042A	Shaft
7042C	Spring
91436	Spring
7042D	Housing
7042F	Holder/Valve Seat
7042H	Nut, M12
7042M	Hinged Cliip
2018P5	O-Ring
2012P5	O-Ring
M6	Hexagonal Nut, M6

LIGHTER:

7052	Lighter, Complete
7052A	Piezo Element
7052B	Frame
7052C	Forkpin (REPLACED BY BOLT #M423)
M423	Flat Head Screw (Replaces #7052C)
7052F	Electrode
7052G	Safety Spring (REPLACED BY Nut #M4ZB)
M4ZB	Nut (Replaces #7052G)
7052H	Rubber Ring

COUPLING NUT:

8274	Coupling Nut, Complete
F841	Fiberring, 8x4x1

PRESSURE REGULATOR COMPONENTS:

PRV	*Pressure Regulator, Complete w/Hose
	*PRV consists of:
	•One #6557 •~3' of #6556
	•One #1-155-13 •two of 6555M
6556	Hose, Per Foot
6555M	Hose Clamp, Screw Style
6557	Precise Regulator
1-155-13	Pressure Regulator
AL19172	Aluminum Ring